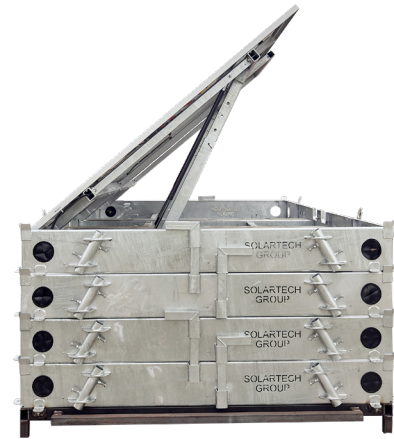
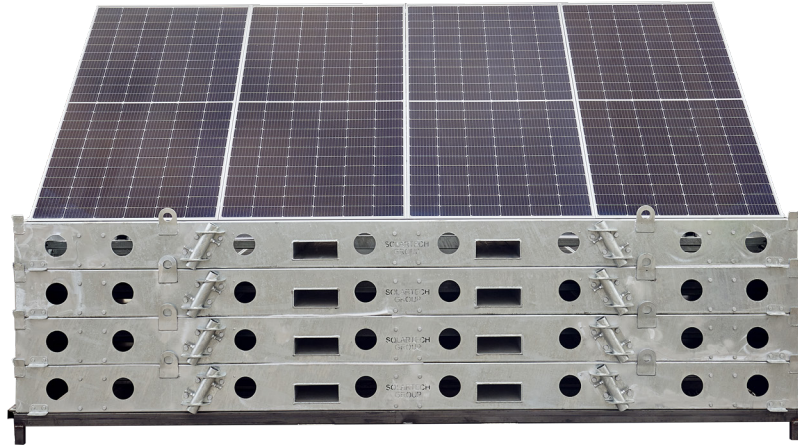


Our patented rapid deployment solar skid is a modular unit that can be scaled to suit any requirement. Deployed in minutes to suit temporary use such as after bushfires or floods or on construction projects to minimise install/removal time and site impact.

The Solar Skid can be adjusted from zero to 40 degrees making it ideal to use in different regions to maximise solar yield. Constructed on a hot dip galvanised frame to ensure a long service life and structural rigidity.

Powered By:



## PRODUCT SPECIFICATIONS

### FEATURES

Mounting	Ballast, Tube piles, Bolt-down anchor points
Solar Tilt Angle	0° - 40° one man lift
Transport	Forklift ports, Interlocking stacking
Deployment	Interlocking in rows

### GENERAL

Power	1.78kWp
Voltage (Voc)	196.8v
Current (Isc)	11.45A

### UNIT

Dimensions (HxWxD)	2200 x 2200 x 1100
Weight	1,950kg
Per 40' flat bed	22
Rapid Deployment	

