



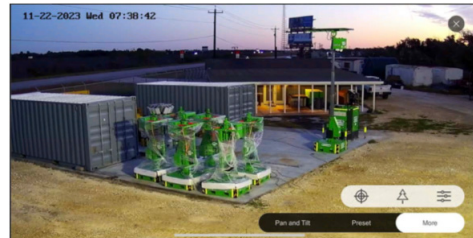
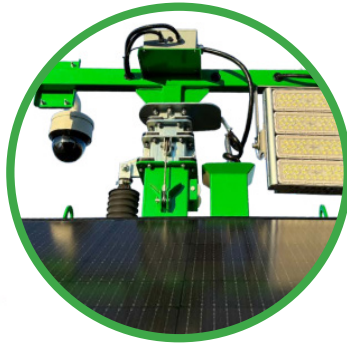
KEY FEATURES

- 7 day timer
- Day/night modes
- Fire extinguisher
- Emergency stop
- Battery isolator
- Adjustable solar tilt
- AC charger
- Wheel chocks
- Tie down points
- Lifting points
- Folding drawbar
- 4G/5G or Starlink communication

EASE OF TRANSPORT

COST EFFECTIVE

SOLAR POWERED



PRODUCT SPECIFICATIONS

GENERAL

Model	GP28K - CCTV Eco
Lumen Output	28,000
Mast Height	7.5 metres
Mast Type	Hydraulic/Cable
Lights	1 x 200w LED Modules
Coverage	600m ² at 5 lux

OPERATIONAL DATA

Wind Rating	100km/h
Working Temperature	0°C to 50°C
Stabiliser Supports	4 x Manual

BATTERY

Battery	10.8kWh Deep Cycle Gel
Runtime	76 Hours
Solar	1.23kWp
Solar Tilt	30° to 45°
Efficiency (solar)	1 hr of sun / 3 hours of light

CAMERA

Camera Quality	1x 4MP 25x PTZ
Lens	1x 4.8 to 120mm Adjustable Focus
Recording Time	12 weeks continuous recording on 4TB Hard Drive
Monitoring (Live/Playback)	Phone App or PC/Cloud
Features	Scheduled recordings, Email/App alerts, Movement/Smart event Detection, false alarm reduction/ vehicle-person recognition

UNIT INFORMATION

Dimensions (Towing)	3140 x 1500 x 2900 (LxWxH)
Dimensions (Stowed)	2200 x 1500 x 2900m (LxWxH)
Dimensions (Deployed)	2200 x 1500 x 7650 (LxWxH)
Weight	1,450kg
Trailer Type	Single Axle
Tyre/Rim Size	215/70R15