



AUSTRALIAN  
DESIGNED



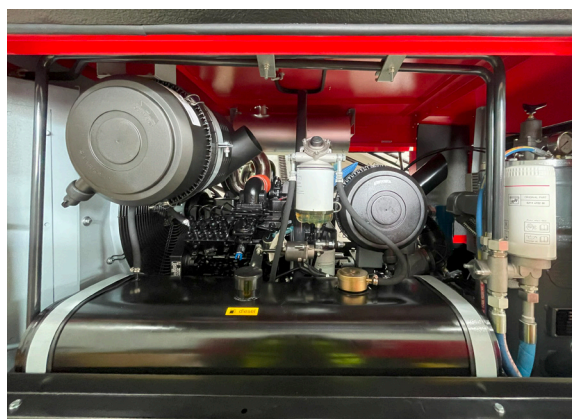
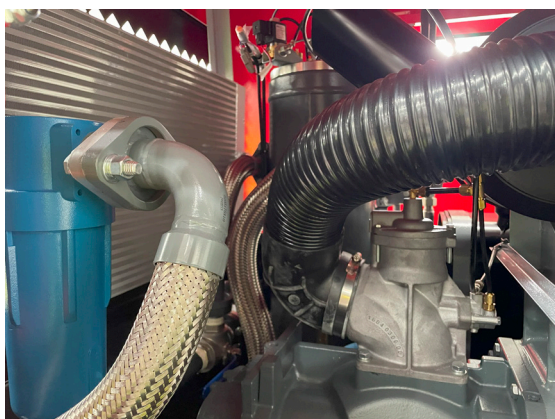
FUEL EFFICIENT



CUSTOMISABLE



DURABLE



## PRODUCT SPECIFICATIONS

### GENERAL

Model	GP130-15
Free Air Delivery	13 m <sup>3</sup> /min (460CFM)
Standard Working Pressure	15 bar 217psi
Engine Speed	2000-1500rpm
Air Outlet Valves	1 x G3/4", 1 x G2 1/2"
Standard Inclusion	Aftercooler

### ENGINE

Manufacturer	Yuchai Tier 3
Engine Model	YCA05190-T300
Cylinders	4
Output at Nominal Speed	140kW

### OPTIONS

Water Separator Filters

### FUEL

Fuel Tank Capacity	180L
--------------------	------

### NOISE LEVEL

Sound Pressure	<80dB(A)
----------------	----------

### UNIT

Length with Towing Device (min)	2862mm
Length with Horizontal Tow-Bar	3651mm
Width	1791mm
Height	1908mm
Operational Weight (Wet)	1900kg

### WARRANTY

12 months warranty, subject to Ts & Cs